



# **THE NEWBRIDGE SCHOOL**

Lionheart Educational Trust

## **A SUPERSTAR'S JOURNEY**

**TRANSITION WORKBOOK**

**Name:**

# Contents

Transition .....	3
Who's who .....	4
Making new friends .....	5
School times .....	6
Key information .....	7
Be the best you can be .....	8
What happens at .....	9
My school bag.....	10
Uniform .....	11
Getting to school .....	12
What worries me? .....	13
What I am looking forward to?.....	14
Hobbies and interests.....	15
Introduction to SLANT.....	16
Introduction to SHAPE .....	17
Introduction to STEPS .....	18
Introduction to PROUD .....	19
Poem .....	20
Five facts about me .....	21
Tutor reading programme.....	22
Lionheart.....	23

# Transiton

## *From Primary to Secondary*

Moving to a new school is always going to feel a little bit daunting and at the same time exciting. We are really looking forward to you joining us at The Newbridge School in August and we cannot wait to get to know you and educate you throughout your time with us. The aim of this transition pack is for you to work through it with your parents/ carers, to feel a little more comfortable and excited about starting with us in August. At the start of the year we aim to:

- Introduce the staff
- Have a whole year group assembly with all the new year 7s
- Introduce your pastoral team, your tutor and your tutor group
- Have a tour of the school
- Have break time and learn how the diner works
- Have lunch time and learn how the diner works
- Be involved in some team building activities as part of your new year group
- Practise getting home after the school day

The transition pack will also give you the opportunity to start your 'Superstar's journey' and to use the tools that you have developed at your primary school.

We hope you are feeling excited about starting at The Newbridge School - here you will begin a brand new journey where you will continue to build up your tools that you will bring from primary school.

## **WE LOOK FORWARD TO MEETING YOU**

Please visit **[www.newbridge.org.uk](http://www.newbridge.org.uk)** to find out all the information you need to complete your pack.



# Who's who?



**REBECCA KNAGGS**  
DEPUTY  
HEADTEACHER



**MICK ROWBOTTOM**  
CO-HEAD



**MIKE GAMBLE**  
CO-HEAD

# Getting ready to make new friends

We are a big school and you will become part of The Newbridge School Family. We would like you to answer the following questions so that we can get to know you!

**1. WHAT IS YOUR FAVOURITE COLOUR OR FOOD?**

**2. DO YOU SUPPORT A FOOTBALL TEAM AND WHICH ONE?**

**3. WHAT IS YOUR ABSOLUTE DREAM JOB?**

**4. WHAT SPORT WOULD YOU COMPETE IN IF YOU WERE IN THE OLYMPICS?**

**5. WHAT IS YOUR FAVOURITE TIME OF THE DAY AND WHY?**

**6. WHAT IS THE MOST RECENT BOOK YOU'VE READ, OR MOVIE YOU'VE SEEN THAT YOU WOULD RECOMMEND AND WHY?**

**7. IF YOU COULD HANG OUT WITH ANY CARTOON CHARACTER, WHO WOULD YOU CHOOSE AND WHY?**

**8. IF YOU COULD BE ANY SUPERHERO, MARVEL OR DC, WHO WOULD IT BE AND WHY?**

# School times

## WHAT TIME DO I NEED TO BE AT SCHOOL FOR?

Find out the times on [www.newbridge.org.uk](http://www.newbridge.org.uk)

TIME	ACTIVITY
	LINE UP
	REGISTRATION
	LESSON 1
	LESSON 2
	BREAK
	LESSON 3
	LESSON 4
	LUNCH
	LESSON 5
	LESSON 6



# Key information

**WHAT TIME DOES SCHOOL OPEN?**

**WHO IS MY TUTOR?**

**WHO IS MY HEAD OF YEAR?**

**WHERE CAN I GO BEFORE TUTOR TIME?**

**WHAT TIME DOES TUTOR TIME START AND FINISH?**

**WHAT DO I DO IF I HAVE TO LEAVE SCHOOL EARLY FOR A MEDICAL APPOINTMENT OR ANOTHER VALID REASON?**

**WHAT DO I DO IF I FEEL POORLY DURING THE SCHOOL DAY?**

**WHAT DO I DO IF THE FIRE BELL RINGS?**

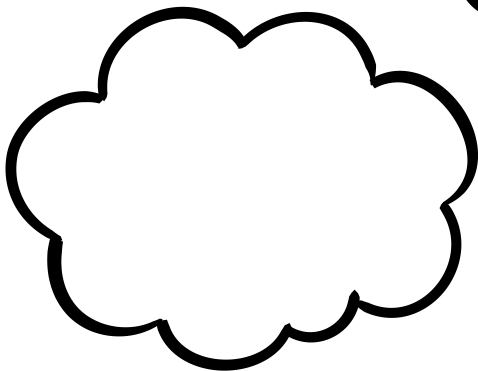
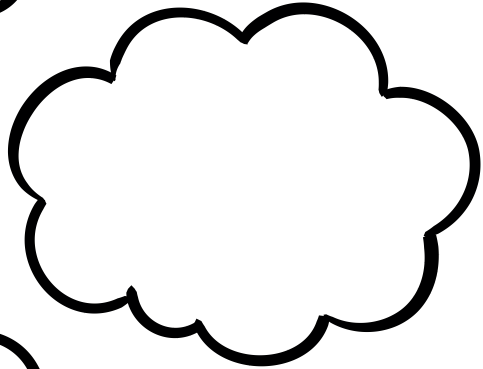
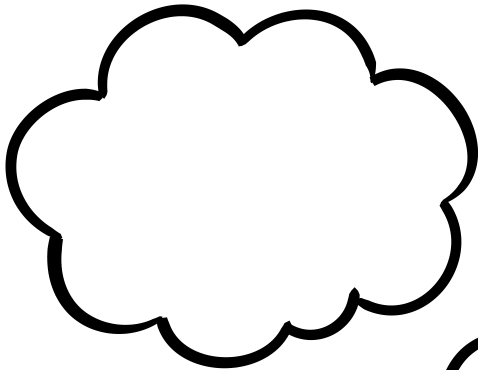
**WHAT DO I DO IF MY LUNCH ACCOUNT IS EMPTY?**

**IF I AM UPSET OR HAVE ANY ISSUES IN OR OUT OF SCHOOL I CAN ...**

**WHAT DO I DO IF I LOSE SOMETHING?**

# Be the best you can be

IN THE BUBBLES BELOW WRITE AN EXAMPLE OF WHERE YOU  
HAVE BEEN THE BEST YOU CAN BE





# **What happens at breakfast?**

**WHAT TIME IS BREAKFAST SERVED?**

**WHAT CAN YOU BUY FOR BREAKFAST?**

**HOW MUCH ARE THINGS TO BUY?**

# **What happens at break time?**

**WHAT CAN WE BUY FOR BREAK?**

**HOW MUCH ARE THINGS TO BUY?**

# **What happens at lunch time?**

**WHAT CAN WE BUY FOR LUNCH?**

**HOW MUCH IS AN AVERAGE MEAL DEAL?**

# My school bag

AT NEWBRIDGE, YOU WILL BE RESPONSIBLE FOR ALL OF YOUR EQUIPMENT AND YOU WILL TAKE IT HOME EACH NIGHT.

WHAT THINGS DO YOU THINK YOU SHOULD BRING TO SCHOOL EACH DAY?



# Uniform

- GREY TROUSERS / GREY OR TARTAN PLEATED SKIRT.
- GREY TAILORED SHORTS.
- SCHOOL TIE.
- SCHOOL BLAZER.
- WHITE SHIRT.
- OPTIONAL PLAIN BLUE OR GREY V-NECK JUMPER UNDER BLAZER.
- PLAIN BLACK FOOTWEAR.
- STUDENTS SHOULD WEAR THEIR NEWBRIDGE PE KIT FOR PE AND DANCE LESSONS.

# Getting to school

HOW WILL I GET TO SCHOOL?

WHO WILL I COME WITH?

HOW LONG WILL IT TAKE?

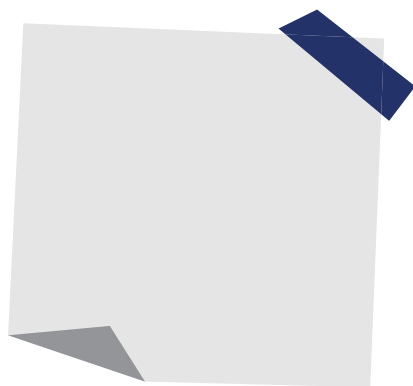
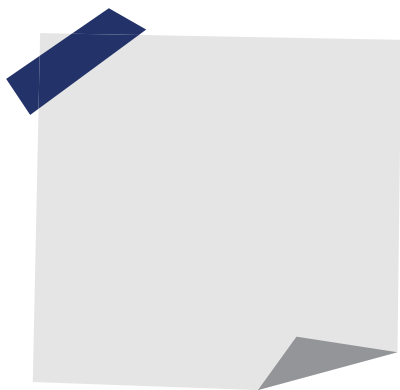
WHERE CAN I KEEP MY BIKE?

WHERE DO I GO IF I AM LATE TO SCHOOL?

WHO IS MY HEAD OF YEAR?



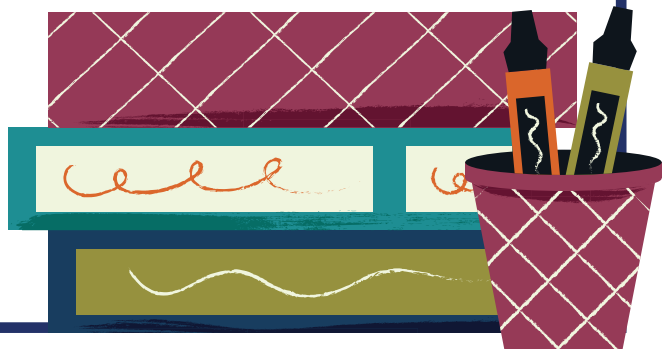
# What worries me about moving school?



# What am I looking forward to?



# Hobbies and interests



# Introduction to SLANT

At The The Newbridge School we explicitly teach respectful behaviour in lessons using SLANT. Find out what each letter in SLANT stands for and fill in the blanks on this page.

**S**

.....

**L**

.....

**A**

.....

**N**

.....

**T**

.....



# Introduction to SHAPE

At the The Newbridge School we expect pupils to present themselves in a professional and “polished” manner. We explicitly teach presentation skills using SHAPE. Find out what each letter in SHAPE stands for and fill in the blanks on this page.

**S**

.....

**H**

.....

**A**

.....

**P**

.....

**E**

.....

# Introduction to STEPS

At The Newbridge School we do things a bit differently. Teaching pupils how to behave is an important part of our curriculum. We expect all members of our community to show kindness and respect. We explicitly teach pupils how to be kind and respectful (good morning/afternoon) and STEPS. Find out what each letter in STEPS stands for and fill in the blanks on this page.

**S**

.....

**T**

.....

**E**

.....

**P**

.....

**S**

.....

# Introduction to PROUD

At The Newbridge School we take pride in our written work and presentation in all of our subjects. Find out what each letter in PROUD stands for and fill in the blanks on this page.

**P**

.....

**R**

.....

**O**

.....

**U**

.....

**D**

.....

# Poem

**ARE YOU ABLE TO LEARN THE POEM OZYMANDIAS BEFORE YOU START SCHOOL WITH US IN AUGUST?**

## **OZYMANDIAS**

**I met a traveller from an antique land,  
Who said—"Two vast and trunkless legs of stone  
Stand in the desert. . . . Near them, on the sand,  
Half sunk a shattered visage lies, whose frown,  
And wrinkled lip, and sneer of cold command,  
Tell that its sculptor well those passions read  
Which yet survive, stamped on these lifeless things, The  
hand that mocked them, and the heart that fed; And on the  
pedestal, these words appear: My name is Ozymandias,  
King of Kings;  
Look on my Works, ye Mighty, and despair!  
Nothing beside remains. Round the decay  
Of that colossal Wreck, boundless and bare  
The lone and level sands stretch far away."**

By Percy Bysshe Shelley

# Five facts about me

1

2

3

4

5

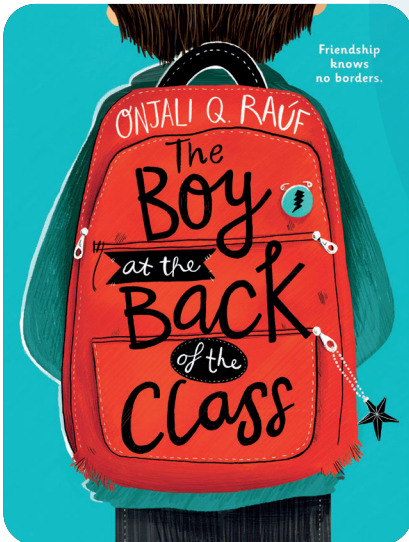


# Tutor reading programme

Here, at Newbridge, we believe that reading is essential. Without strong reading skills, students will not have access to learning more broadly or greater life opportunities following their time at school. With this in mind, we ensure that reading is a part of our weekly routines academically and holistically.

One of these regular routines is our tutor reading programme. This means that we read aloud to students in each year group during the morning's tutor time at least twice a week. These books are deliberately selected to broaden our students knowledge of the world and to encourage them to build empathy for others with different life experiences. We hope that you, as parents, will continue to support your child's education by encouraging them to read at home too.

**The first book we read is 'The Boy at the Back of the Class.'**



Please listen to the recording of the first chapter and read along. You can find the recording and the first chapter of the book on our Transition page.

Scan here to listen to  
**Chapter One**



# Lionheart

The Newbridge School is part of the Lionheart Educational Trust, a wider network of 14 schools across Leicester and Leicestershire, which will bring further opportunities throughout your time with us.

Being part of Lionheart means exploring together ALL aspects of your education. Your academic subjects like mathematics and English are incredibly important. What is EQUALLY important is your personal development, your health and well-being and your understanding of our core British Values.

Together, Lionheart students take opportunities to learn about these values and explore what respect, tolerance and equality mean. You can get involved in Trust-wide events that celebrate culture, difference, inclusion and everyone's right to express themselves. Some examples, where you may also get to meet students from other Lionheart schools, are\*:

## Lionheart Speaks

Workshop support in speech writing and public speaking/performance on topical global issues, culminating in a show at a Leicester theatre.

## Lionheart Pride

A festival for Lionheart schools' LGBTQ+ community and allies, jam packed with guest speakers, educational resources, music and a feel-good vibe where students can meet new, like-minded friends.

## Lionheart Games

An athletics competition at the Saffron Lane Stadium involving a number of keystage 3 and 4 students from all Lionheart secondary schools.

\*subject to change and availability of places.



**LIONHEART**  
EDUCATIONAL TRUST



**THE NEWBRIDGE  
SCHOOL**

Lionheart Educational Trust